



Gloucester Park | Restaurants & Events |



| About Our Venue |

Gloucester Park, the home of harness racing in Western Australia is located on the banks of the Swan River in the exclusive precinct of East Perth. With its close proximity to the Central Business District, free on site parking, catering packages to suit all types of functions and budgets it has all the makings of the ideal venue for your next function or event.

Each and every Friday night, the best horses in WA fight it out for a share in some of the richest metropolitan stake money in Australasia. Gloucester Park is also home to some of Perth's best dining options, from the ever popular Steelo's on the ground floor, to the stylishly appointed Beau Rivage Restaurant, perched high in the grandstand with a perfect view of the track and surrounding Swan River.

For private bookings we also have The Suites situated on the top floor of the Grandstand and our raised Trackside Enclosures are the closest you can get to the action with all the style and ease of a private function.

From the immaculately groomed front lawn to an array of function rooms to suit all styles of functions and budgets Gloucester Park is the home of Harness Racing in the CBD and the home of your next function or event!



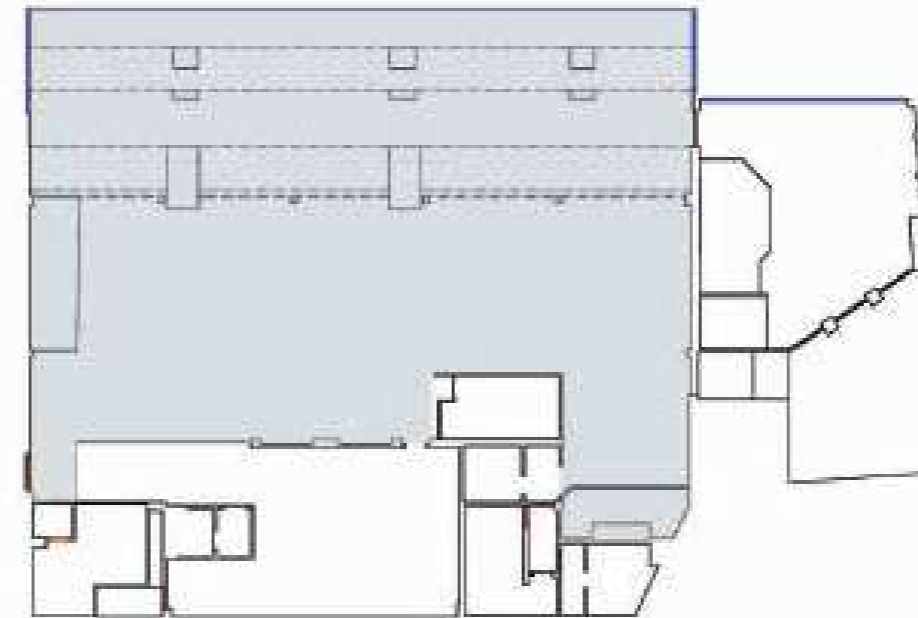
| Beau Rivage Restaurant |

This truly is Gloucester Park's premier dining destination.

Beautifully renovated and located on the top level of the JP Stratton Grandstand, the Beau Rivage boasts sweeping views of the entire racetrack with a stunning backdrop of the Swan River.

Seafood Buffet style dining with the option to include a beverage package, plus a private Bar and Tote facilities means you have everything you need in the stylishly appointed room. Dining packages available every Friday night, or book the whole venue for a private event any other day of the year.

With a capacity of 330 seated guests, and the added option to include staging and entertainment equipment, the Beau Rivage is the perfect place to host your next event.



Venue Capacity

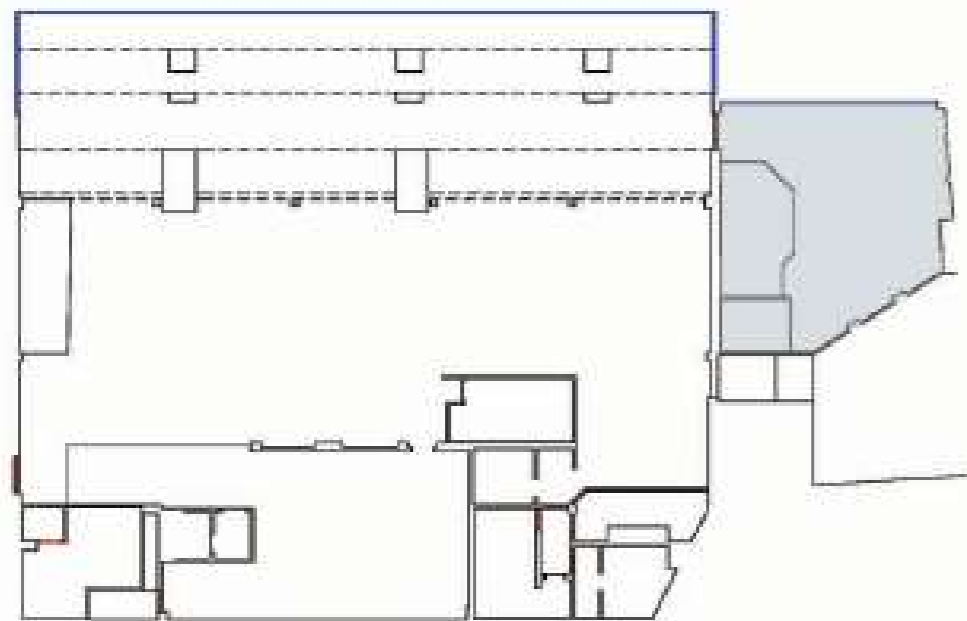
| | |
|------------------------|-----|
| Restaurant Style | 330 |
| Banquet (Flat Section) | 80 |
| Cocktail | 500 |

| Legends Lounge |

Located on the top floor of the Grandstand, the Legend's Lounge offers a private bar and Tote facilities for functions of up to 50 people.

Guests can mingle in a cocktail style environment whilst enjoying a magnificent view of the harness racing action on the track, or choose to dine from the international seafood buffet from the Beau Rivage Restaurant.

The Legend's Lounge offers the perfect level of intimacy and style for your Cocktail Party or Sundowner and is a great venue for holding a memorable celebration. This room can also be set to accommodate smaller groups for formal dinners and luncheons.



Venue Capacity

| | |
|-----------|----|
| Banquet | 60 |
| Classroom | 25 |
| Theatre | 60 |
| U-Shape | 25 |





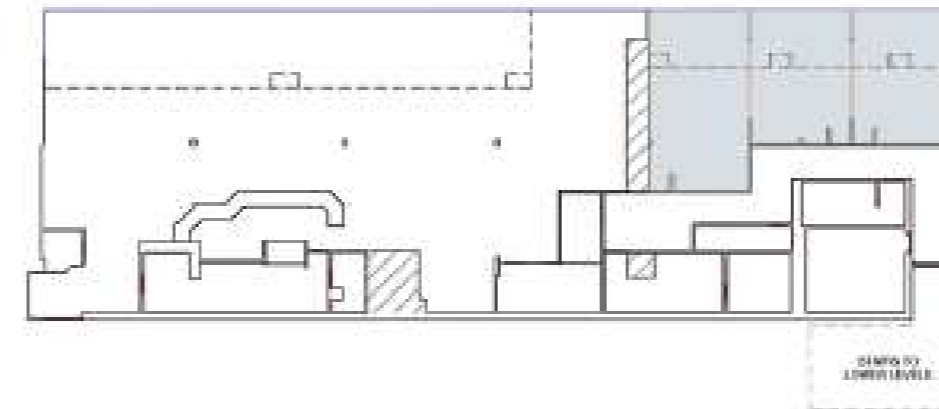
| Private Suites |

There is no better way to reward your star performers or VIP clients, celebrate a birthday or just enjoy a night of racing action with your mates than in a private suite at Gloucester Park.

Gloucester Park offers 3 exclusive private suites located on the top floor of the J.P. Stratton Stand.

You and your guests will enjoy the views of the Swan River, Perth Stadium, Crown Casino and of course, Gloucester Park while our friendly staff take care of everything you need to have a memorable night out.

All inclusive packages cater for 15-20 guests per room or the three suites can be combined to fit a maximum of 50 VIP guests, who will enjoy a vast array of cocktail or buffet style meals with premium beverages.



Venue Capacity

Cocktail or Buffet

15, 20, 35, 50

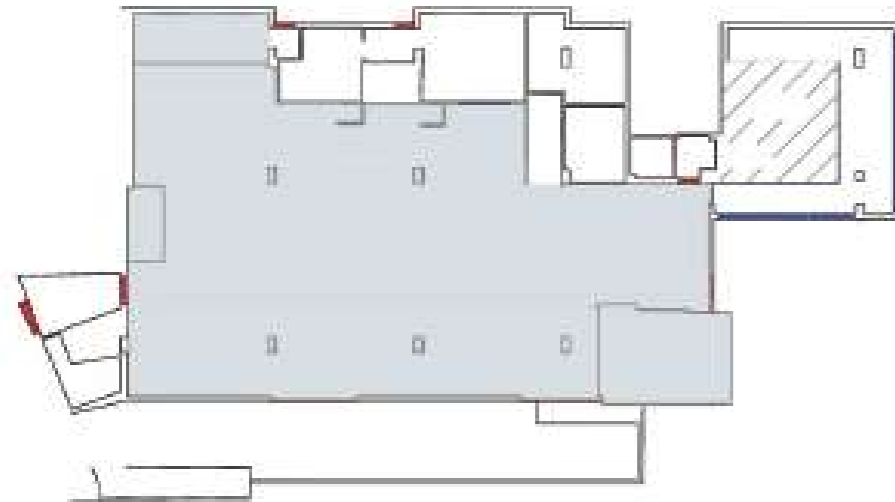
| Steelo's |

Steelo's is the home of casual a la carte dining on the ground floor. Boasting exciting views of the track, two bars and Tote facilities, Steelo's offers great value for money dining with a difference.

Our chefs are passionate about producing the freshest, best value meals for you and source seasonal produce from the best places in WA. The ever changing specials and seasonal change of menus means you will always find something new to enjoy.

Bookings are welcome each and every Friday night, or simply walk in and ask our friendly staff for the best seat in the house.

Steelo's can also be utilised for casual celebrations, functions, meetings, seminars or school dinner dances on non race nights.



Venue Capacity

| | |
|-----------------------|-----|
| Restaurant (Inside) | 170 |
| Restaurant (Alfresco) | 60 |
| Theatre | 300 |
| Classroom | 80 |
| Cocktail | 300 |



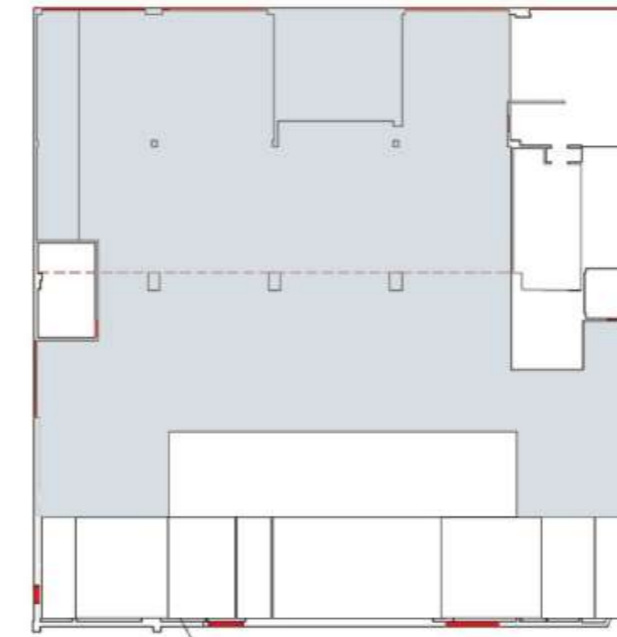


| JP's Sportsbar |

JP's Bar is the best place on-course to immerse yourself in everything sport. Three giant screens showing the best LIVE sport from around the globe with the latest technology in Tote and sports betting information at your fingertips. The wrap-around bar with \$7 pints across all taps and sports-bar menu will have you coming back every Friday night.

With the addition of stage and lighting - JP's transforms into an epic private function space for the young and young at heart. 18ths, 21sts, engagements, bucks/hens parties - if you're looking for fun, JP's is the place for you.

Parties from 20 up to 200 can be accommodated inside, with the option of opening up onto the perfectly manicured lawns just outside the front entrance for larger groups.



Venue Capacity

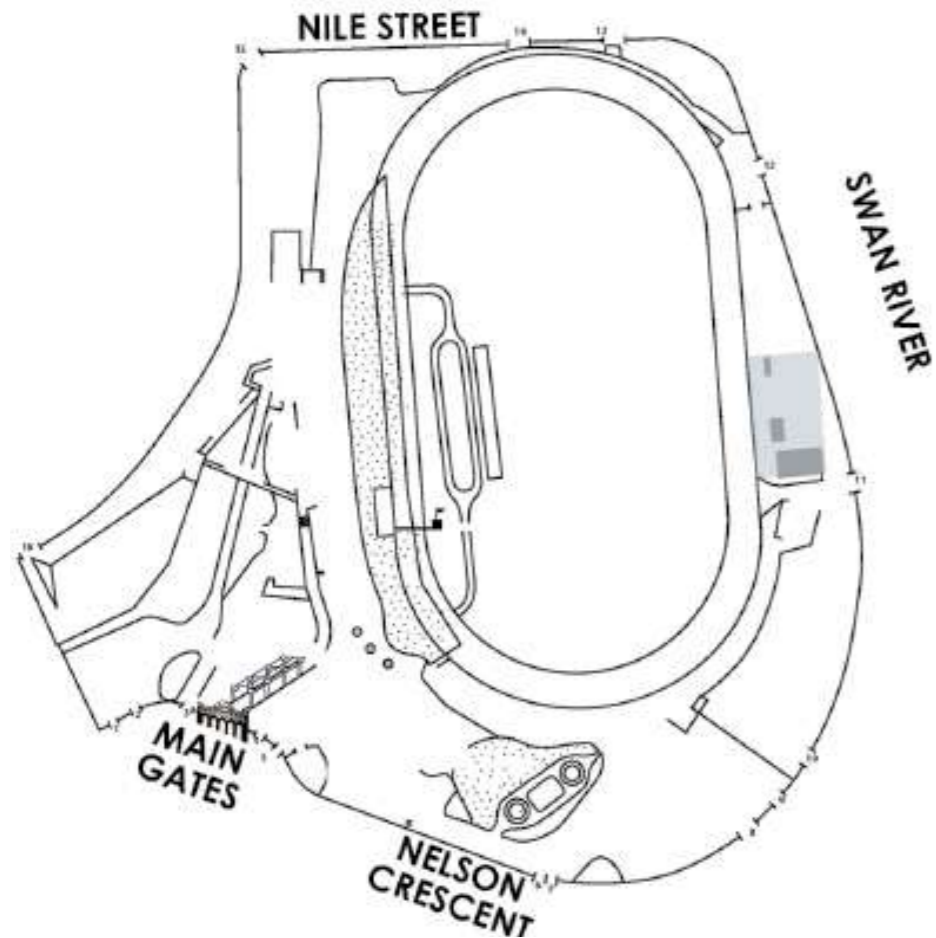
| | |
|----------|-----|
| Cocktail | 300 |
| <hr/> | |
| Banquet | 200 |
| <hr/> | |

| The Bridge Bar |

Located on the river side of the racecourse The Bridge Bar is Gloucester Park's latest pop up function venue.

Open on Optus Stadium event days enjoy easy access to parking and a range of food and beverage options pre and post event with just a short 350m walk over the new Matagarup Bridge to the stadium.

The Bridge Bar has a relaxed atmosphere with trendy casual pallet furniture and is perfect for private functions such as sundowners and birthday parties on non event days.



Venue Capacity

Cocktail

2000

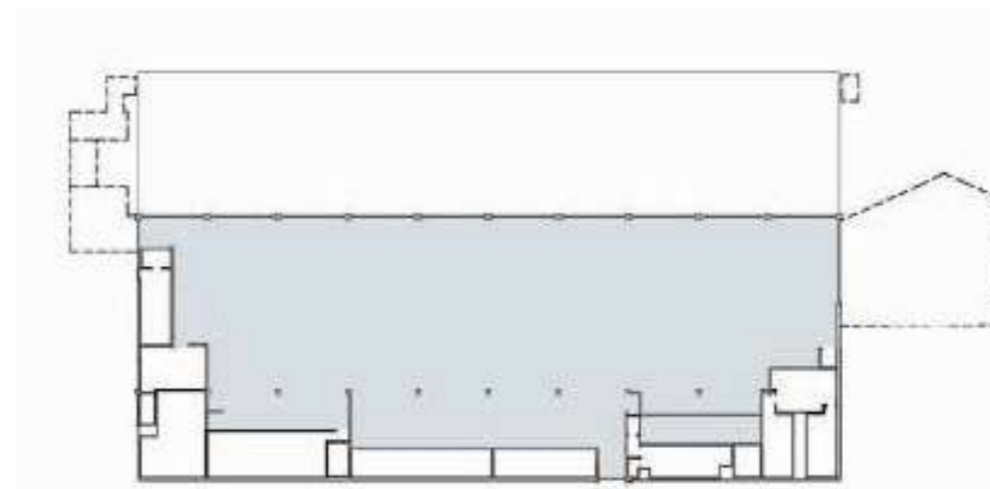




| Golden Nugget |

Located on the first floor, The Golden Nugget features floor to ceiling windows with stunning views of the Swan River, Perth Stadium and Crown Perth lights. On our race nights your guests can take advantage of the large grandstand just outside the main function room to soak in all of the atmosphere of the action on the track.

Perfect for gala dinners, trade shows, quiz nights, seminars and presentations of up to 600 guests, the Golden Nugget can accommodate any set up you require. With the ability to scale back the size of the room to accommodate intimate functions for as little as 25 guests and a range of food and beverage packages available there is no space in Perth more versatile.



Venue Capacity

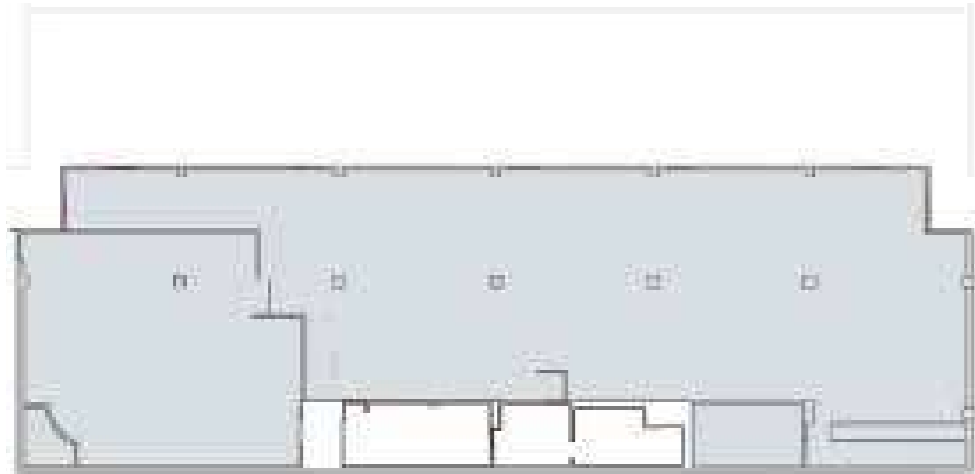
| | |
|-----------|------|
| Banquet | 450 |
| Cabaret | 200 |
| Cocktail | 1000 |
| Theatre | 1000 |
| Classroom | 400 |

| Radiant Oro |

The Radiant Oro is conveniently located on the first level of the J.P. Stratton Stand overlooking the finishing line.

This room is the perfect option for functions of 100-200 people accommodating any set up you require as well as flexible catering options.

Complete with private tote and bar facilities the Radiant Oro also offers exterior access to the grandstand, making it one of our most popular spaces for Awards Nights, Cocktail functions and Gala Dinners.



Venue Capacity

| | |
|----------|-----|
| Banquet | 200 |
| Cocktail | 350 |

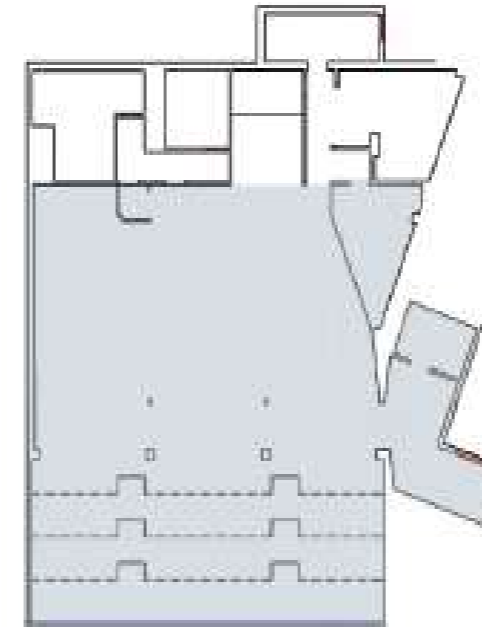




| Presidents Room |

Located on the first floor of the James Brennan Stand the President's Room has sweeping views of the Swan River landscape and is directly opposite the famous Gloucester Park finishing post.

Suited to 80 guests for a seated function and up to 100 cocktail style with its own private bar and toilet facilities this room provides the perfect private function space for birthdays, engagements or work Christmas parties.



Venue Capacity

| | |
|-----------|-----|
| Banquet | 80 |
| Theatre | 60 |
| Cocktail | 120 |
| U-Shape | 25 |
| Classroom | 35 |

| Quinny's |

Located on the ground floor, Quinny's is one of our most popular private function rooms with an adjoining deck for a point of difference.

Suitable for groups of up to 100 people, it offers a great view of the finish line, private bar and Tote facilities as well as the flexibility to accommodate cocktail or buffet style events.

Whilst ideal for corporate functions, birthday parties and celebrations the room is also a wonderful venue for seminars, meetings or daytime conferences.

With the flexibility to utilise a range of audio visual equipment set ups and the availability of separate break-out rooms Quinny's offers plenty of options to meet all of your conference and meeting needs.



Venue Capacity

| | |
|-----------|-----|
| Banquet | 60 |
| Cocktail | 100 |
| U-Shape | 20 |
| Classroom | 35 |
| Theatre | 80 |



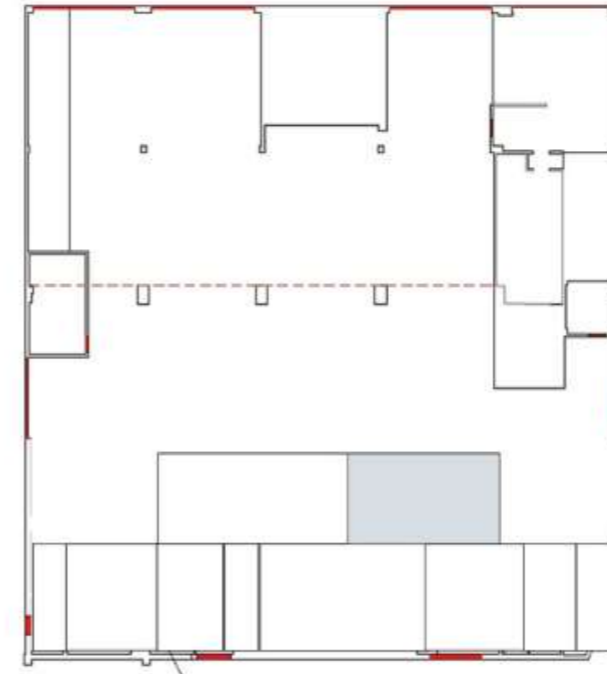


| Winner's Room |

Located on the Ground Floor adjacent to JP's Sportsbar the Winner's Room is perfect for small meetings or as a break-out room for larger conferences.

The room features two large screens with laptop connectivity and can be set up classroom or boardroom style as you require.

With multiple delegate catering options we can tailor a package to suit all budgets.



Venue Capacity

Boardroom 20

Cocktail 20

| Trackside Enclosures |

Gloucester Park's ever popular elevated outdoor function areas get you up close to the action on the track with the exclusive feel of a private function.

These 20, 30 and 50 person function spaces can be booked with a cocktail menu and choice of beverage package to suit any budget.

Customise your event set up with high-end outdoor furniture or with minimal cocktail furniture to fit more of your friends and family in!

The Trackside Enclosures are available each and every race night and are perfect for corporate sundowners with a difference on any other night of the week.

Venue Capacity

| | |
|--------------|----|
| Baltic Eagle | 40 |
|--------------|----|

| | |
|------------|----|
| San Simeon | 70 |
|------------|----|

| | |
|---------|----|
| Binshaw | 50 |
|---------|----|





Nelson Crescent, East Perth WA 6004
PO Box 6025, Hay Street, East Perth WA 6892
www.gloucesterpark.com.au | (08) 9323 3530 | bookings@gloucesterpark.com.au