



Light ADL is a unique social enterprise and the home of immersive light and arts. As a not-for-profit organisation and registered charity, we exist to create opportunities for artists through the support of our events, hospitality and immersive technologies.

Discover a world of endless possibilities at Light ADL. Experience the versatility and adaptability of our unique spaces from small, intimate gatherings to large scale venue takeovers. Let our expert team guide you to the ideal solution, complete with cutting-edge immersive LED technology to make your event unforgettable.

The future of events is here now at Light ADL.

## OUR SPACES

THE LAB

BEAGS GARDEN

THE LIGHT ROOM

AURORA RESTAURANT

# THE \* LAB

Unleash your imagination at The Lab, a multi-functional, immersive venue with 50 square metres (that's 14 million pixels!) of LED screens. Transcend reality and transport you and your guests to any world, real or imagined. With a versatile and adaptable design, The Lab can be configured in various formats and boasts a stunning bar. Ideal for corporate launches and networking events, presentations, celebrations, immersive dining experiences and more, The Lab can accommodate seated dining for 80 guests and cocktail style events for up to 180.

Let The Lab be the backdrop for your next unforgettable event.

80 PAX Seated Maximum (Long Table Dining)

90 PAX Seated Maximum (Theatre Style)

180 PAX Standing Maximum

*"The Lab at Light ADL is a unique and inspiring venue, our guests were awe struck by the immersive nature of the event we created. The giant screens helped us present a stunning display, but it was the incredible support we had from the staff at Light ADL that made the event a great success." - Tafe SA*



# THE \* LAB

The Lab features an array of LED panels that offer a total of 50sqm of immersive screen space. The panels are standardized and consist of:

East Wall: 11.5m x 2m

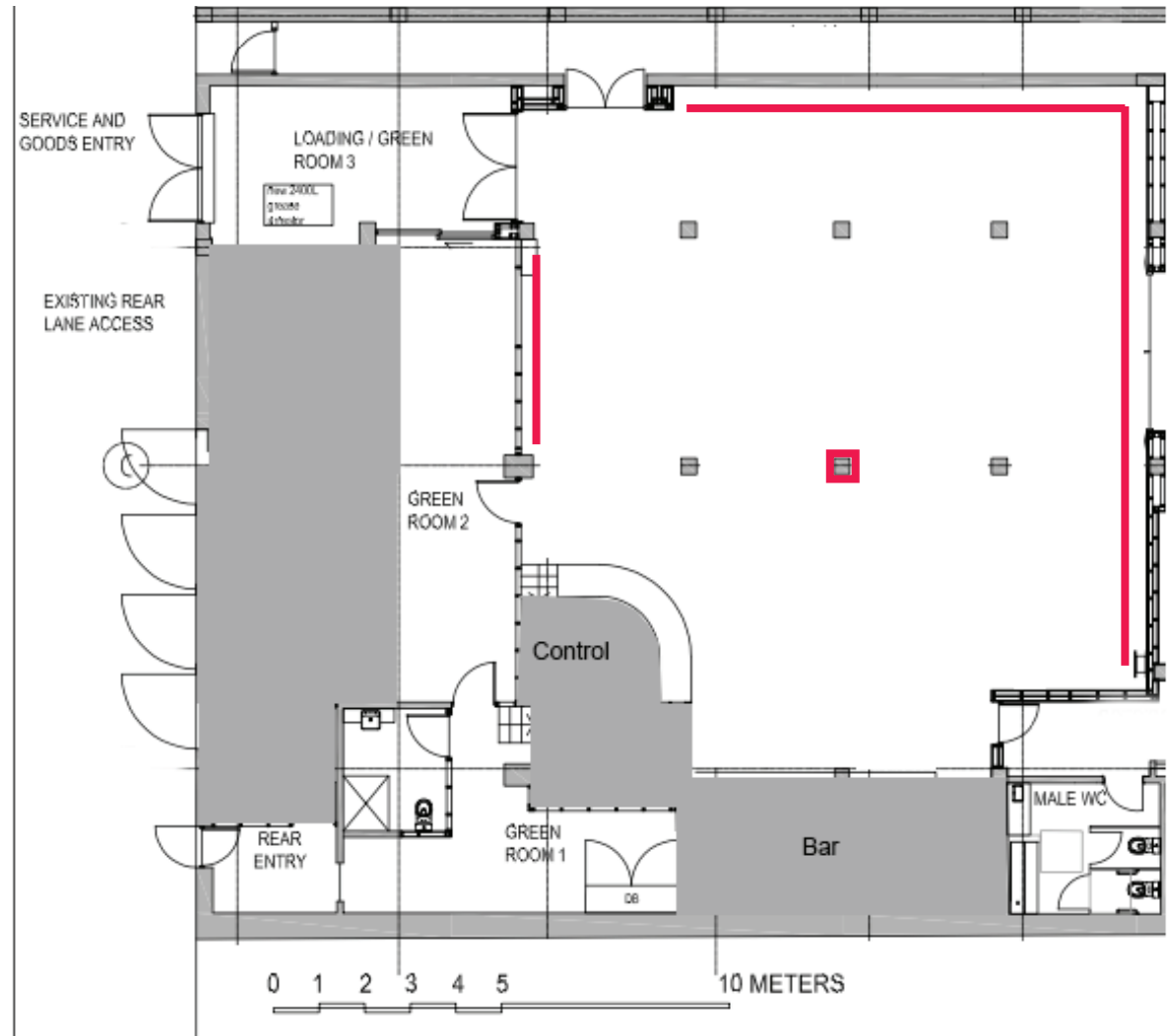
North Wall: 8m x 2m

West Wall: 4.5m x 2m

LED Pillar: 0.5m x 0.5m x 2m

These panels create a dynamic and captivating environment and serve as the perfect backdrop for any event.

## LED SCREENS



# AURORA

Aurora is bringing fresh flavours, local produce and sustainability to the table to create memorable dining experiences and functions.

Under the expert leadership of Head Chef Sam Cooper, Aurora delivers world-class cuisine that is both accessible and sophisticated. With an open kitchen featuring a purpose-built braai, guests are treated to a contemporary dining experience that exceeds international standards.

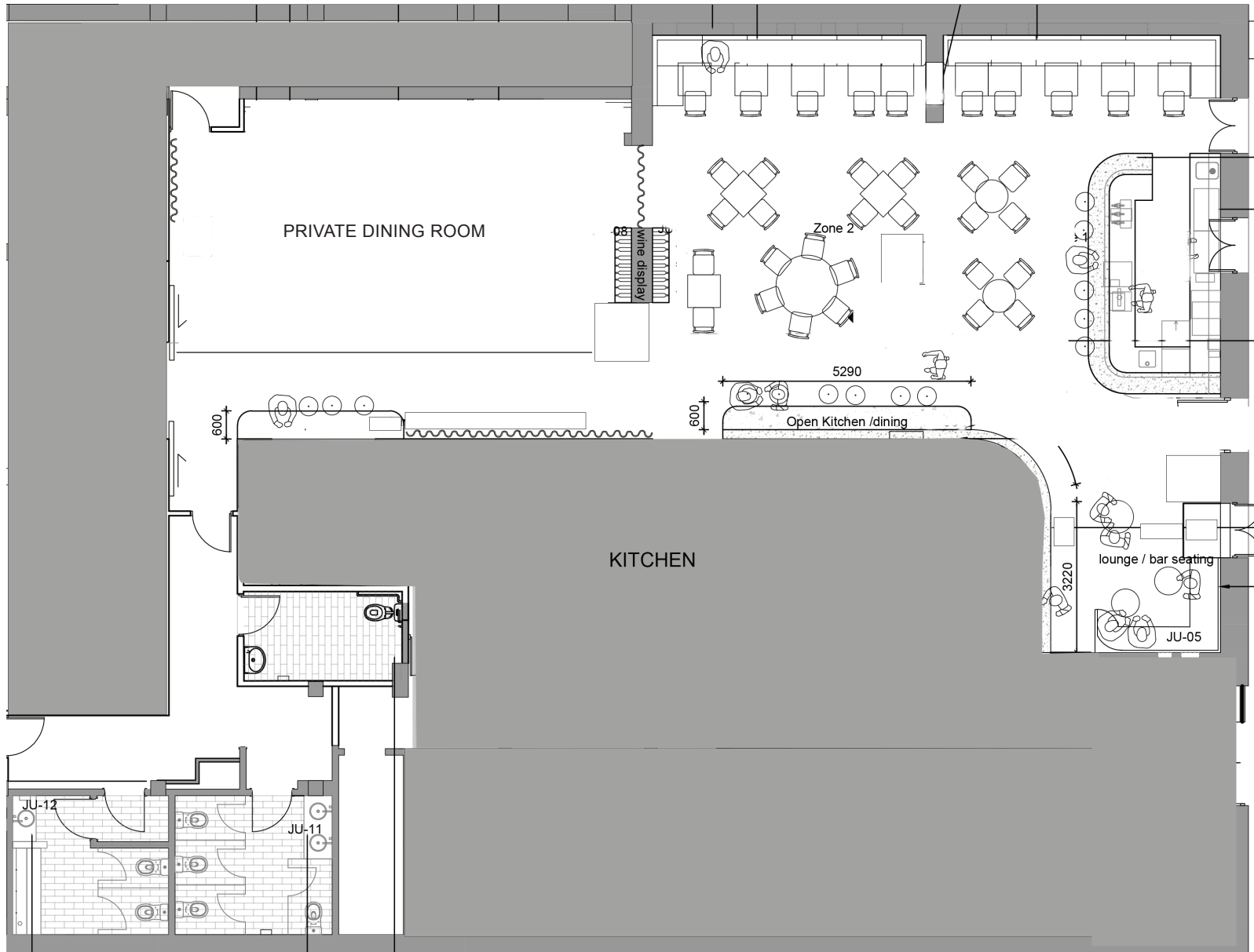
Designed by award-winning interior designer Georgie Shepherd, Aurora is a versatile venue suitable for a variety of events, including corporate functions, weddings, and other celebrations. The restaurant can be booked exclusively or for smaller groups our private dining space is ideal for intimate gatherings. Experience the best of Adelaide dining at Aurora.

100 PAX



Scale 1:100

# AURORA



# THE LIGHT ROOM

BAR. GALLERY. STUDIO

Upstairs at Light ADL is our newly renovated venue, The Light Room. Home to three unique spaces, our Bar, Gallery and Studio brings people together in a place where social interaction and new creative experience forms fuel a vibrant social scene and a growing arts community.

From small gatherings to large scale events, The Light Room spaces can be hired individually or in combination to accommodate your specific needs. The Bar and Gallery are perfect for intimate gatherings and cocktail parties, while the Studio provides a blank canvas for more elaborate presentations and exhibitions. Our flexible options enable you to create the exact experience you desire, with the ability to adapt and tailor the spaces to fit your specific requirements. By combining our three unique spaces, you can create a truly unforgettable event perfect for brand launches, milestone celebrations, product unveilings, conferencing and large-scale functions.



# THE LIGHT ROOM

BAR. GALLERY. STUDIO

The Bar, designed by award winning Georgie Shepherd, commands a magnificent view over Light Square through windows that spill sunlight into a spacious room finished with leather banquette seating, polished concrete floors and exposed stone and brick walls that hint at over 150 years of heritage.

Whether you're hosting a networking event, celebrating a milestone, or saying "I do," The Light Room Bar is a versatile space that adds a touch of luxury to every occasion.

For a more intimate experience, consider partial private hire with our curtained sections. Enjoy exclusivity and seclusion while still being a part of our vibrant bar atmosphere.

100 Pax





# THE LIGHT ROOM

BAR. GALLERY. STUDIO

Adjacent to the Bar and soon to undergo refurbishment, **The Gallery** is set to be transformed into a chic, minimalist space with polished concrete floors, high ceilings and gallery lights. The Gallery serves as a blank canvas for pop-up art installations, brand takeovers or networking events. Start your event with cocktails and canapés amongst captivating artwork in the Gallery.

Adjacent to the Bar, the Gallery leads the way to The Studio, a unique and immersive space unlike any other.



# THE LIGHT ROOM

BAR. GALLERY. STUDIO

The **Studio**, surrounded by 150 square metres of cutting edge LED screens, is a unique multipurpose space that offers full immersion and can transport you to any world, creating new ways of seeing and experiencing things we had never imagined.

The Light Room Studio serves as a blank canvas for an unlimited range of uses to create captivating displays, dynamic presentations, impactful brand launches, and interactive experiences that will elevate your event to unprecedented heights.

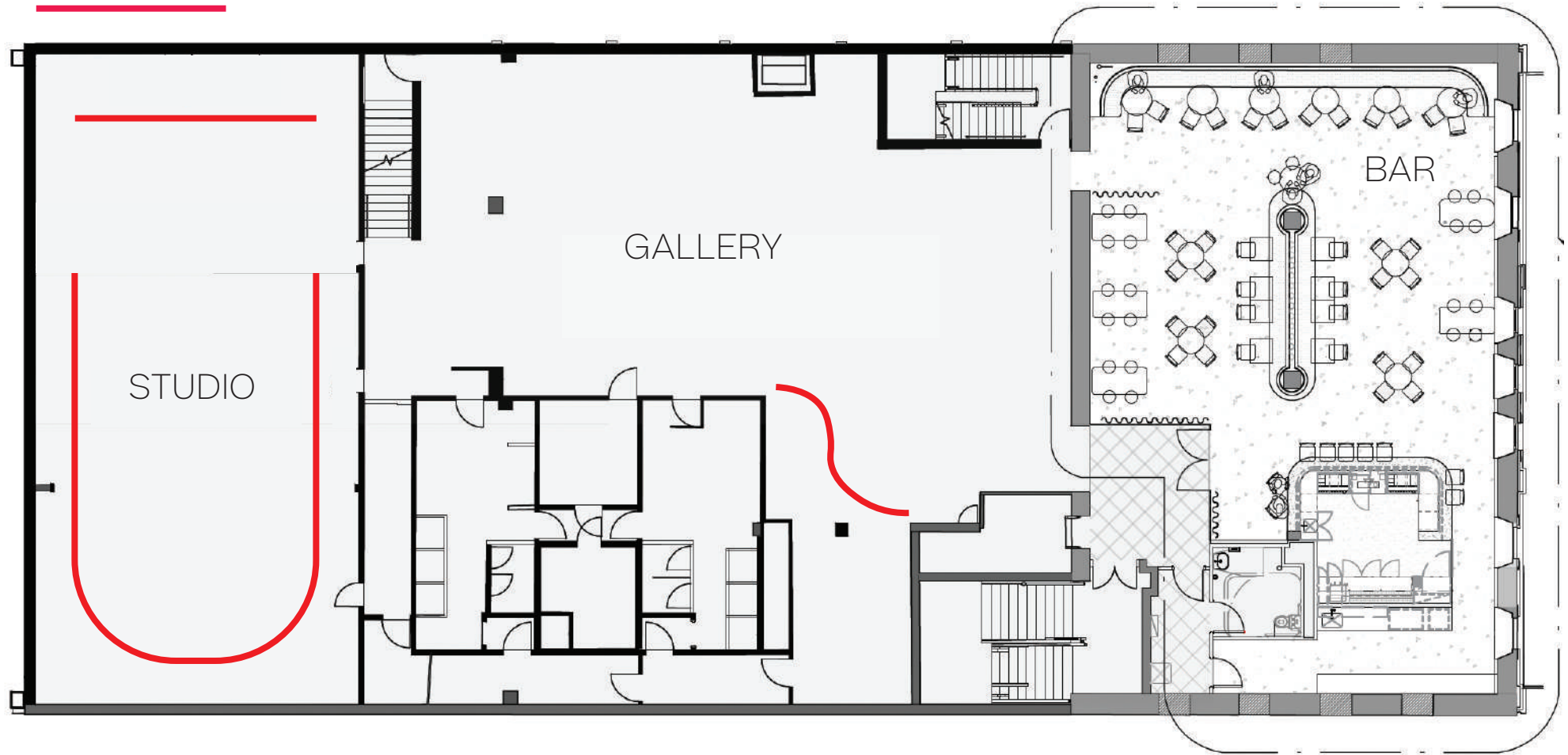
100 PAX



# THE LIGHT ROOM

BAR. GALLERY. STUDIO

LED SCREENS



PLAN | 1:200

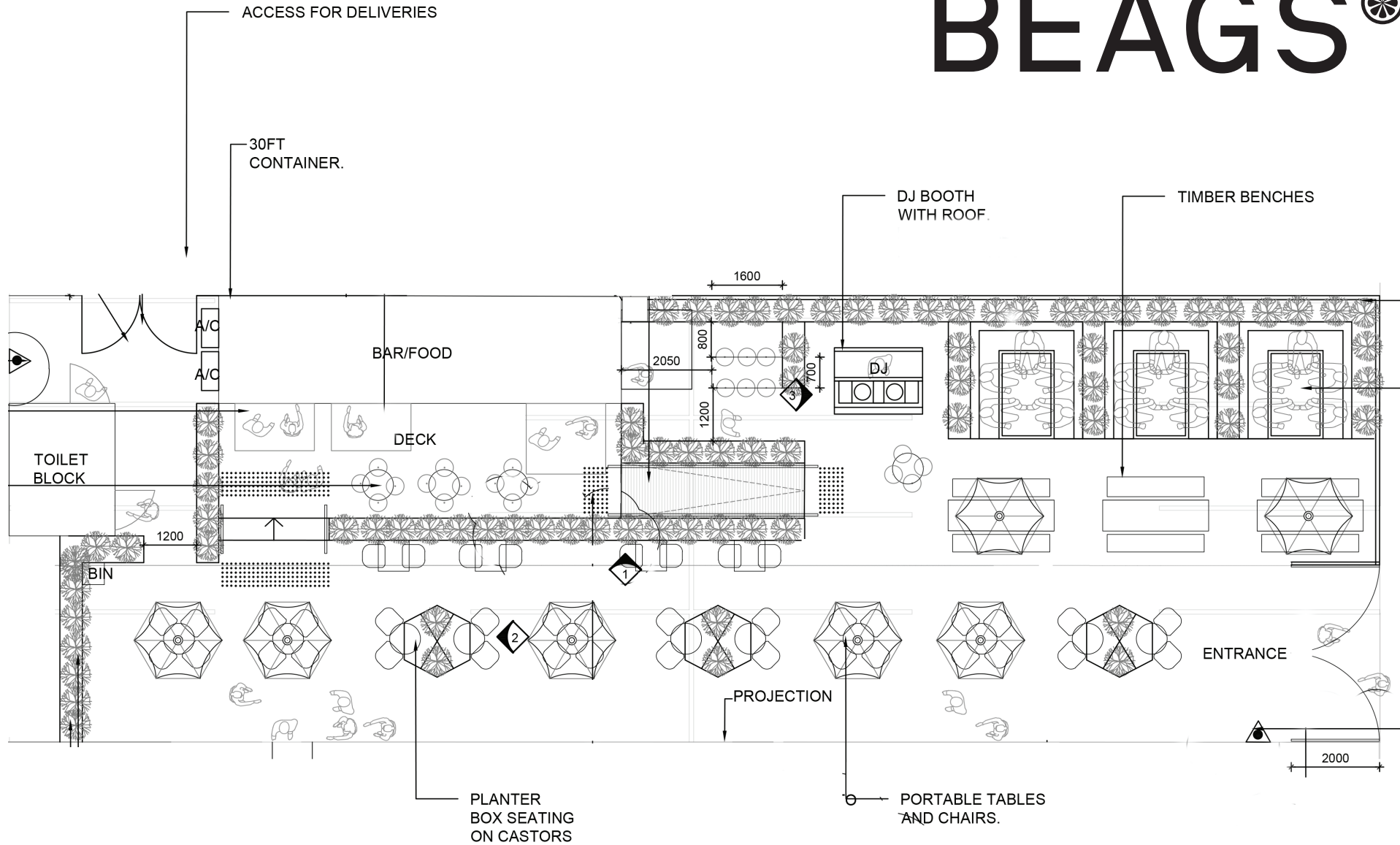
# BEAGS<sup>🍷</sup>

Escape the hustle and bustle of the city and embrace the beauty of nature at Beags, our outdoor function space located just outside of The Lab. Surrounded by lush greenery and charming timber booths, Beags sets the scene for casual events, outdoor welcome drinks, and networking opportunities. Enjoy the relaxed atmosphere and get the party started with our built-in DJ booth, perfect for after-party vibes and dancing the night away under the stars or getting your guests into the mood before the main festivities kick off.

160 PAX Seated/Standing  
Marquee offers some undercover area



# BEAGS®



# TECHNOLOGY

Experience the impossible with immersive technology. With 13,888,000 pixels and 350 square meters in LED screens, Light ADL is home to industry-leading technology in the heart of Adelaide CBD.

Our in-house technicians can help you bring your event to life using existing visual content or working with our tech team to create something new. Content can be displayed in an infinite number of ways and the unique layout and format of the LED allows for dynamic and immersive content playback.

Choose from one of our immersive packages to build the vision for your event.

## BRONZE

The Bronze Package utilises our high performing audio visual equipment and provides a foundation for clients to experience the benefits of immersive technology to create a truly captivating experience for their guests. Elevate your event with access to our extensive library of stock immersive imagery and limited dynamic content to utilise the unparalleled technology offered at Light ADL.

## SILVER

As part of our Silver Package we've partnered with some of Australia's top cinematographers to bring you a world of experiences like never before. Our high-resolution imagery, either crafted specifically or captured, is designed to transform your next event with our state-of-the-art LED screens. When necessary, our in-house technicians can revamp even the most standard PowerPoint presentation into a unique and captivating experience tailored to your event.

## GOLD

Our Gold Immersive Package provides you with access to Adelaide's leading immersive technicians, eager to push the boundaries of what's possible for your event. This package includes a consultation with our technicians to collaboratively craft a storyboard and bring your vision to life through a fully immersive experience. Don't settle for just any event, elevate it to the next level with the Gold Immersive Package.

# FURNITURE AND STYLING

Transform The Lab and The Light Room Studio into the perfect setting for your event with our state of the art LED screens. These spaces provide a blank canvas ready to be customized to your exact needs. For those looking for additional room dressing, we partner with Atmosphere Events, a local provider of decor and furniture, offering a wide range of services and products to make your event truly unforgettable.

“Whether it's a landmark life event, or a business activation we will customise the perfect event for you.

We specialise in everything from Corporate, Media, Premiere's & Launches, Visual Merchandising, Life Occasions, Decor and Furniture hire.”

[www.atmospherevent.com.au](http://www.atmospherevent.com.au)

For floral arrangements and styling we recommend working with Floristry by Sally who sources local and sustainable flowers and foliage to create bespoke arrangements.

[www.floristrybysallywatton.com](http://www.floristrybysallywatton.com)  
[@floristrybysallywatton](https://www.instagram.com/floristrybysallywatton)



# TO EAT

## CANAPES

### THE GARDEN

poached beetroot, fennel, almond & yuzu tahini tofu tartlets (v, df, gf)

field mushroom arancini, parmesan & truffle mayonnaise (vg)

braised & pickled daikon, spring onion & kombu broth (v, df, gf)

crispy tofu, coconut, lemongrass & chinese chilli oil (v, df, gf)

corn & aged cheddar croquette, chive & peri peri mayonnaise (veg, gf, df)

charred spring onion & fried, smoked & pickled cauliflower (v, df, gf)

### THE FIELD

beef tartare, bush tomato, cured egg yolk, horseradish, kasundi & crouton (df)

crispy pork belly, thai sweet & sour, herb salad & cos lettuce (gf, df)

tea smoked duck breast, mandarin marmalade & candied pistachio (gf, df)

smoked chicken breast, candied walnut & kunzea tartlets (gf, df)

pulled spiced lamb shoulder, raita & gluten free grains (gf)

beef tataki, spring onion, enoki, ponzu (gf, df)

### THE SEA

smoked king ora salmon croquette, smoked soy mayonnaise & salmon roe (df)

baked scallop in shell, kombu butter, sunrise lime & nori (gf)

grilled prawn, compressed cucumber, sweet & sour sauce (gf, df)

salmon ceviche, coconut, lime, chilli & coriander (gf, df)

steamed crab cake & dill aioli aioli (df)

warmed pickled octopus, fennel & orange aioli (gf, df)

## DINING

For seated functions, let our Chefs take you on a journey through a selection of their favourite dishes that promise to ensure your event menu becomes a memorable experience in itself.

Choose from either two, three or five course tasting menus, or a shared experience.

### SAMPLE MENU

#### 5 COURSE TASTING MENU

Bread, House Butter

Zucchini Flower, Prawn, Tomato

Flathead, Kohlrabi, Mayo, Basil

Lamb, Labneh, Strawberry, Shisho

Wood Roasted Chicken, Bread Pudding

Tiramisu, Coconut, Smoked Chocolate

## ADD SOMETHING SPECIAL

### PAELLA STATION

watch our chefs at work cooking and serving a steaming paella fresh from the pan

### OYSTER STATION

oysters on ice stored in a half barrel, freshly shucked for your guests by one of our chefs

### SASHIMI STATION

fish as fresh as it gets! have one of our chefs on hand to cut your guests sashimi to order

# TO DRINK

CHOOSE A 1 TO 4 HOUR PACKAGE FROM THE OPTIONS BELOW

## ROSE

---

Villa Fresco Prosecco  
Killerman's Run Riesling  
H Chardonnay  
Mercer Rosé  
DCB Pinot Noir  
Tscharke Shiraz, Shiraz, Shiraz  
Coopers Pale Ale  
Prancing Pony The Stage Roadie  
Soft Drink & Juice

## SILVER

---

Mordrelle Blanc de Blancs  
Rieslingfreak No. 2  
Levantine Hill Levant Chardonnay  
Vinteloper Pinot Pinot Rose  
Charlotte Dalton Pinot Noir  
Tscharke Stonewall Shiraz  
Coopers Pale Ale  
Little Bang East End Draught  
Soft Drink & Juice

## GOLD

---

Champagne Taittinger Brut Reserve  
Stefano Lubiana Pinot Gris  
Polperro Chardonnay  
Triennes Rosé  
Alkimi Willowlake Pinot Noir  
Levantine Hill Estate Syrah  
Coopers XPA  
Sapporo Yebisu Lager  
Soft Drink & Juice

### OR CHOOSE A BAR TAB / CASH BAR

+ ADD A PERSONALISED COCKTAIL ON ARRIVAL TO YOUR DRINKS PACKAGE FOR \$20 PER PERSON

all guests are to be on the same beverage package  
vintages and beverage selections are subject to change

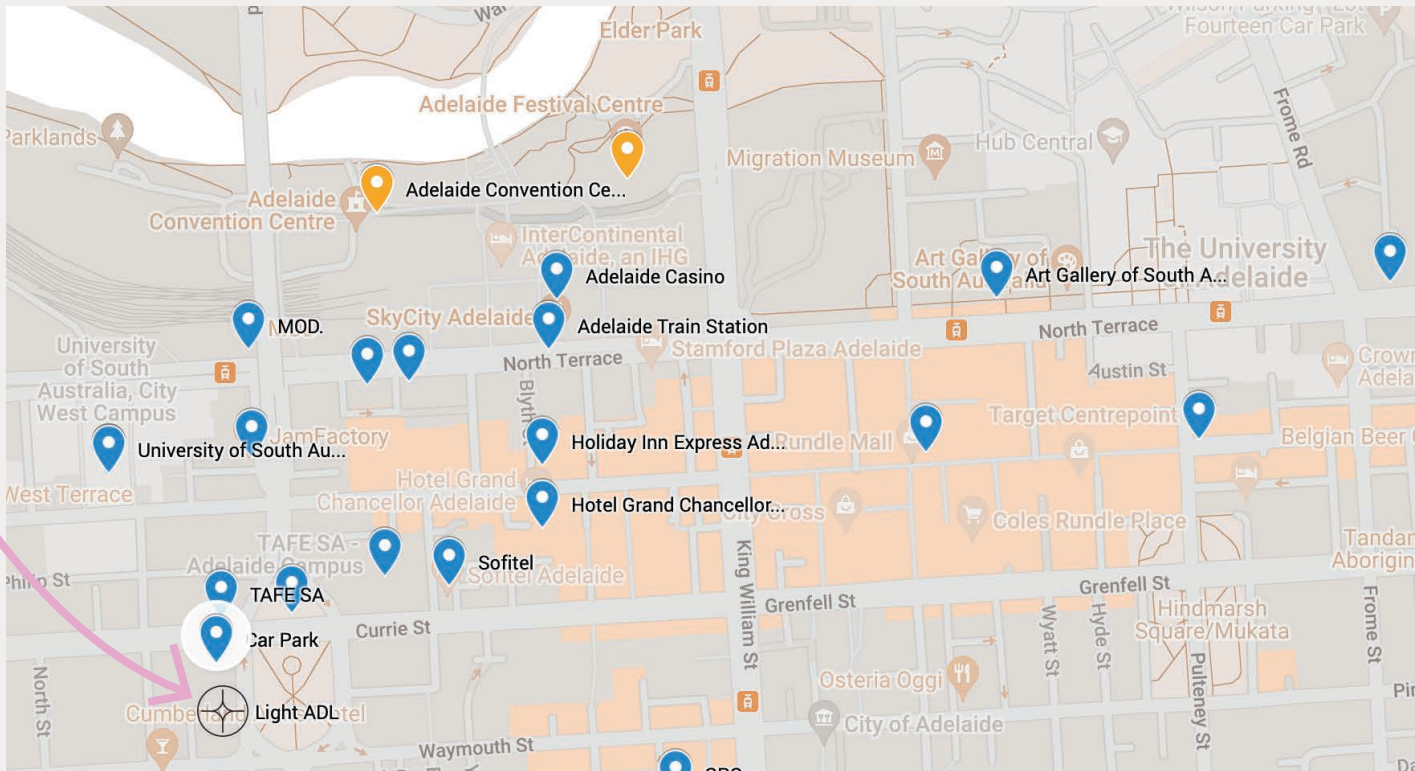
L I G H T  
A D L





# WHERE TO FIND US

Conveniently located in Adelaide's CBD on Light Square, we are close to a number of local destinations and easily accessible by Uber, Taxi, Bus, Tram and Train with multiple parking options nearby.



## GET IN TOUCH

+61 421 104 469

[www.lightadl.com.au](http://www.lightadl.com.au)

@light\_adl 

@lightadl 

Light ADL 

[functions@lightadl.com.au](mailto:functions@lightadl.com.au)